

LILLIPUT®

10.1" LED TOUCH CAMERA MONITOR

Field monitor by LILLIPUT with Broadcast Quality for DSLR & Full HD Camcorder.
Application for Field Broadcasting & Making Movies. Strongly recommend for Filmmakers and Pro Photographer!

TM-1018/P | TM-1018/O/P | TM-1018/S



Revolutionary Touch Operation

Release buttons free, and access to camera auxiliary functions easily and quickly.



Advanced Functions

RGB histogram, color histogram, luminance histogram, luminance waveform, YCbCr parade waveform, RGB parade waveform, vector scope & audio level meter.

- ★ Multi-touch capacitive screen
- ★ 170° Wide viewing angles
- ★ High resolution: 1280x800
- ★ High contrast: 800:1
- ★ Abundant interfaces
- ★ Wide voltage: DC 7-24V
- ★ Tally indicating
- ★ Slimmer & portable design



HDMI®
HIGH-DEFINITION MULTIMEDIA INTERFACE

Small unit, Big wisdom

Lilliput creatively integrated waveform, vector scope, video analyser & touch control into on-camera monitor, which provides **Luminance/Color/RGB histograms, Luminance/RGB parade/YCbCr parade Waveforms, Vector scope** and other waveform modes; And measurement modes such as Peaking, Exposure & Audio level meter. These assist users to accurately monitor when shooting, making and playing movies/videos.

Advanced Functions

Level meter, Histogram, Waveform & Vector scope can be displayed horizontally at the same time; Professional waveform measurement & color control to realise and record Natural color.



Vector scope



Waveform



Level meter



Peaking



False color



Histogram



Exposure



Check field



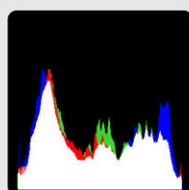
Color bar



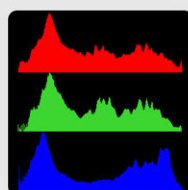
Image flip



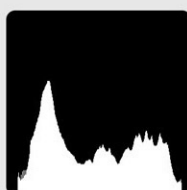
Pix to pix



RGB Histogram



Color Histogram



Histogram

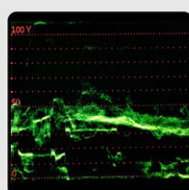


Histogram

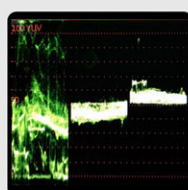
Histogram consist of RGB, Color & Luminance histograms.

- > RGB histogram: shows the red, green, and blue channels in overlay histogram.
- > Color histogram: shows histograms for each of the red, green, and blue channels.
- > Luminance histogram: shows the distribution of brightness in an image as a graph of luminance.

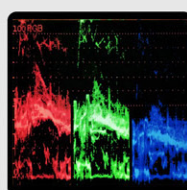
The 3 modes can be selected to meet users' best needs and view visually the exposure of whole and each RGB channels. Users have the full contrast range of video for easy color correction during post production.



Luminance



YCbCr Parade



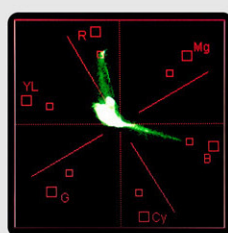
RGB Parade



Waveform

Waveform monitoring consist of Luminance, YCbCr parade & RGB parade Waveforms, which used for measuring the brightness, luminance or chroma values from a video input signal. It not only can warn the user for out-of-range conditions such as overexposure errors, but also assist with colour correction & camera white and black balance.

Note: Luminance waveform can be enlarged horizontally on the bottom of display.



Vector Scope



Audio Level Meter



Vector scope

Vector scope shows how saturated the image is and where the pixels in the image land on the color spectrum. It can also be displayed in various sizes & positions, that allows users to monitor color gamut range in real time.



Audio Level Meter

The Audio Level Meters provide numerical indicators and headroom levels. It can generate accurate audio level displays to prevent errors during monitoring.



Peaking



False Color

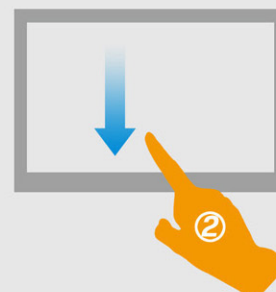


Exposure

- > Camera Mode
- > Aspect Marker
- > Underscan
- > PIP
- > Flip H / V
- > Center Marker
- > Aspect Ratio
- > H/V Delay
- > Pixel-to-Pixel
- > Color Bar
- > Screen Marker
- > Check Field
- > 8x Zoom
- > Freeze Input
- > ...

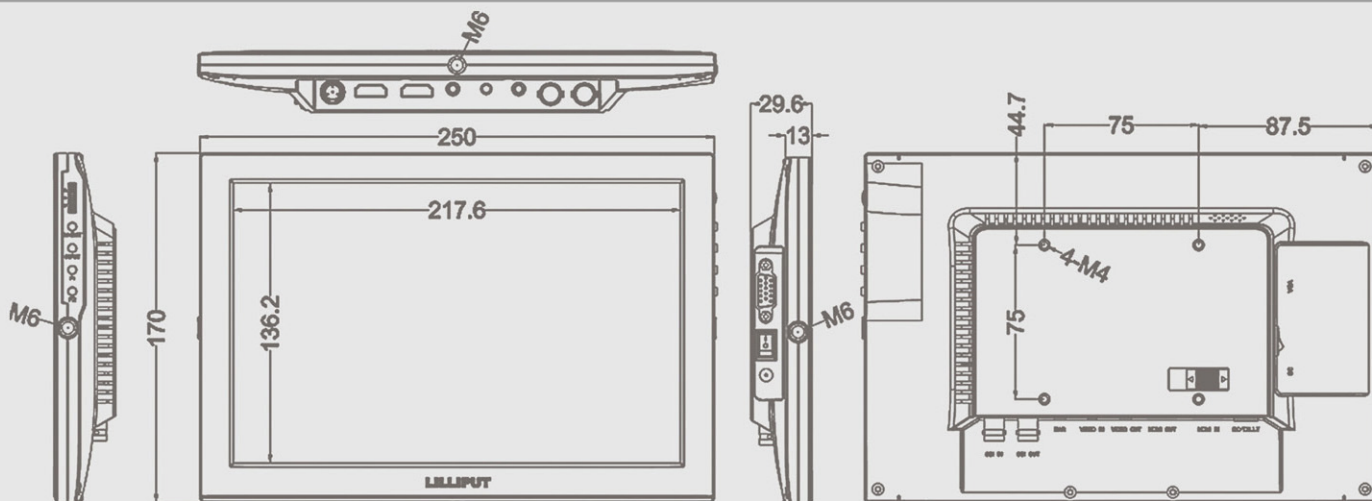
Touch Control Gestures

- Slide up to active the shortcut menu.
- Slide down to hide the shortcut menu.





OUTLINE DIMENSION



SPECIFICATIONS / ACCESSORIES

| | | | | |
|-------------|-----------------------|---|--|----------|
| DISPLAY | Panel | 10.1" LED IPS | 1. Folding sun shade | 1 piece |
| | Physical Resolution | 1280×800, support up to 1920×1080 | 2. VESA battery plate | 1 piece |
| | Aspect Ratio | 16:9 | 3. Battery plate (F-970, QM91D, DU21 or LP-E6) | 2 pieces |
| | Brightness | 350cd/m ² | 4. HDMI A/C cable | 1 piece |
| | Contrast | 800:1 | 5. Mini XLR | 1 piece |
| INPUT | Viewing Angle | 170° / 170°(H/V) | 6. Composite cable | 1 piece |
| | 3G-SDI | 1 (optional) | 7. Video output cable | 1 piece |
| | HDMI | 1 | 8. Shoe mount | 1 piece |
| | Composite | 1 | 9. Battery plate bracket | 1 piece |
| | TALLY | 1 | 10. 12V DC adapter | 1 piece |
| OUTPUT | VGA | 1 | 11. Gimbal bracket | 1 piece |
| | 3G-SDI | 1 (optional) | 12. Suitcase | 1 copy |
| | HDMI | 1 (optional) | 13. V-mount / Anton Bauer mount (optional) | 1 piece |
| AUDIO | VIDEO | 1 | 14. VGA cable (optional) | 1 piece |
| | Speaker | 1 (built-in) | 15. VESA folding bracket (optional) | 1 piece |
| POWER | Ear Phone Slot | 1 | 16. Li-ion battery (optional) | 1 piece |
| | Current | 1200mA | | |
| | Input Voltage | DC 7-24V | | |
| ENVIRONMENT | Battery Plate | V-mount / Anton Bauer mount / F970 / QM91D / DU21 / LP-E6 | | |
| | Power Consumption | ≤12W | | |
| | Operating Temperature | 0℃~50℃ | | |
| DIMENSION | Storage Temperature | -20℃~60℃ | | |
| | Dimension(LWD) | 250×170×29.6mm | | |
| | Weight | 630g | | |



Note: due to constant effort to improve products and product features, specifications may change without notice.